



THANK YOU for purchasing our EURO+DRIVE® system. This install procedure is fairly easy but if you do run into any difficulties please do not hesitate to contact us.

Tools Needed:

EURO+DRIVE® DEVICE
 PC BASED COMPUTER (WINDOWS OS)

Time Needed: 30min to 1 hour (Dependant on Software Version)

Skill Level (1-5): .5 (Yes, POINT 5)

INSTALL PROCEDURE

STEP 1 Open the EURO+DRIVE® box and insert the USB card into your computer (Pic 1)

STEP 2 – INSTALL the My Genius Software, this installs all the necessary software and drivers (Pic 2)

STEP 3 - Plug in your EURO+DRIVE® into the USB port on your computer (Pic 3)

STEP 4 My Genius will display a **“MANDATORY UPDATE”** notice click **OK** and allow the unit to activate. (Pic 4)
*****NOTE*** - TURN OFF FIREWALL (IF ACTIVE)**

STEP 5 Your software and hardware will be updated and **ACTIVATED AUTOMATICALLY.**

STEP 6 – Allow the unit to update both the device and software. Once completed please proceed out to you car.

STEP 7 - Plug the EURO+DRIVE™ into the OBD2 port with the included serial to OBD2 cable, place key in ignition.

STEP 8 Follow the dashboard on and off prompts. The unit will first IDENTIFY your ECU:

IDENTIFICATION -->(Select WORK--->ABARTH-->124 SPIDER+--->1.4.L MULTI-AIR---->CAN Flash 0611)

Follow the dashboard on and off prompts. The unit will then READ your ECU:

READING -->(Select WORK--->READING--->ABARTH-->124 SPIDER+--->1.4.L MULTI-AIR---->CAN Flash 0611)

STEP 9 - Once the file is stored on the E+D device please proceed back to your computer and plug the unit in via the USB

STEP 10 - Start the “My genius” Software and click “ **DOWNLOAD FROM MYGENIUS”**

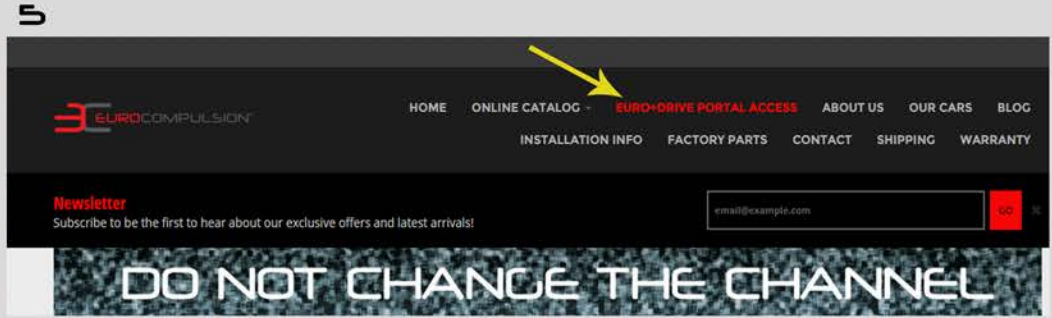
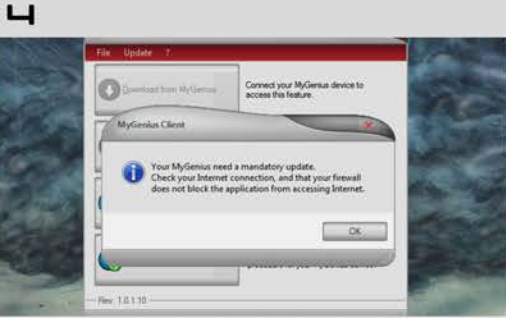
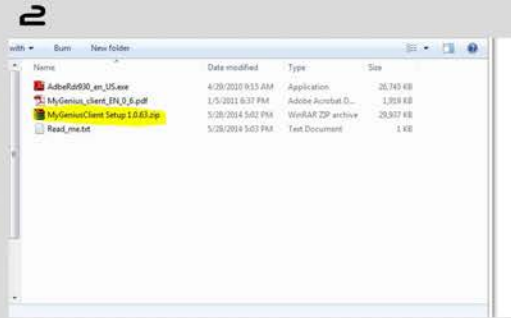
STEP 11 - Copy the MYGfile.FPF file to your desktop

STEP 12 Now log back in to your EURO+DRIVE® PORTAL/CLOUD and select upload file and upload the MYGfile.FPF to your STOCK folder.

STEP 13 After uploading your stock file, **please upload a note or document list of your current modifications. You can also use our tune request form to do this, located in the instructions folder on the portal.**

****** We will be AUTOMATICALLY notified that you have uploaded your stock file, please allow 24hrs for your file. Other phase files will come automatically and you will be notified when updated files are available via email.**

INSTALL & READ/WRITE INSTRUCTIONAL PHOTOS



WRITING TO YOUR ECU:

STEP 1 - Once you are notified there is a new file Proceed to your EURO+DRIVE™ Portal (Pic 5)

STEP 2 - Copy your new file to the desktop (IE. xxxPHASE0.FPF)

STEP 3 - OPEN the “MY GENIUS” software and select **“UPLOAD TO MY GENIUS”** (Pic 7)

STEP 4 - Now UPLOAD your New file (IE. xxxPHASE0.FPF)

STEP 5 - Go out to the Car plug in the EURO+DRIVE® via the OBD2 Port and place the key in ignition

STEP 6 - Select **“WORK”** then select **“WRITE”** and follow the prompts (See Writing instructions BELOW)

*****PLEASE ENSURE YOU SELECT THE CORRECT FILE, click on the right arrow to scroll between calibration files.**
(Pic 8)

IMPORTANT WRITING INSTRUCTIONS

- Do not use any AUX devices during the writing procedure, such as MP3 players, mobile devices, etc. Turn off your radio and AC/Heat controls. Also be sure your headlights are not on.
- Keep your doors closed during initialization of the file writing. We recommend putting your top down, and rolling down the driver side window if you plan not to be present in the vehicle during the process.
- For dash on/off prompts:
 - Push ignition/start button twice to turn dash on (do not depress the brake pedal). Once dash turns on, wait for start up chime to cease before pressing OK on your device.
 - Push ignition/start button once to turn dash off.
- Please wait 5-10 seconds between prompts before proceeding with the OK button on the device to allow for consistent communication speed.

(EXAMPLE: Device prompts to “Turn Dashboard ON” then press OK. Push ignition/start button twice to turn dash on, wait 5-10 seconds, then press OK.)

**Please contact us for any tech support or questions
in regards to install**