

-First and foremost just a quick THANK YOU for purchasing our intake system. This install procedure is fairly easy but if you do run into an difficulties please do not hesitate to contact us.

## TOOLS NEEDED:

- 1-1/4 Ratchet with small extension
- 1-8mm socket
- 1-screwdriver
- 1-pair of pliers

Time Needed: 20min\*(Make sure car is cool)

Skill Level:Level 1-5: Skill level 1

## REMOVAL PROCEDURE

STEP 1- Remove the 8mm screws on the Air filter box / UN-clip hose from Red cover

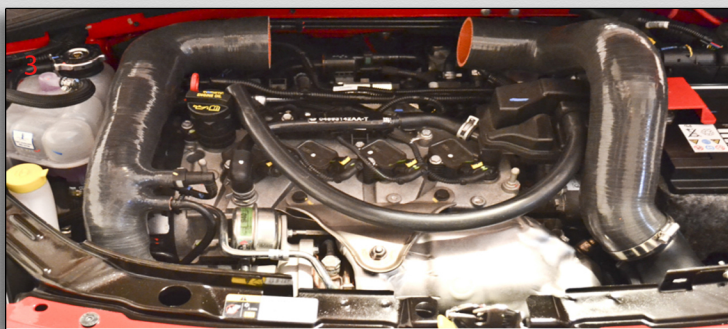
STEP 2 – Remove Red cover and DISCARD OEM FILTER & OEM ENGINE COVER

STEP 3 - Loosen Clamps from air-box cover and from turbo inlet

STEP 4 - Using pair of pliers remove small vacuum line and remove large vacuum line (pinch tab)

STEP 5 – Using an 8mm socket remove the front air scoop

STEP 6 - Remove the accordion style portion of the front air scoop (8mm bolt) (you can either snap off the tab or use a dremel tool and remove the bottom tab, see image 9 and image 10)



## INSTALL PROCEDURE

**STEP 1-** Install Both sides of the Silicone Intake  
(Install with clamps but leave loose)

**STEP 2 –** Re-connect Vacuum lines

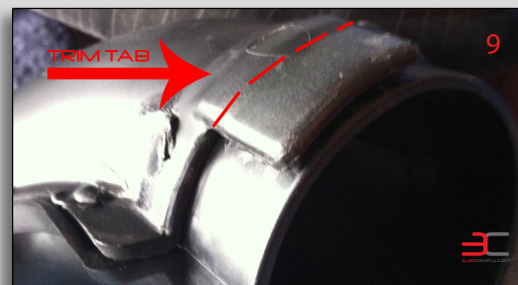
**STEP 3 –** Install CarbonFilter between both Silicone hoses  
(push filter under cowl)

**STEP 4-** Connect PCV hose to PCV Valve and connect  
it port on turbo side intake.

**STEP 5 –** Tighten clamps on filter

**STEP 6 -** Position Filter and Hoses (make sure silicone  
hoses are aligned properly and not touching hood)

**STEP 7 –** Please see alignment image #5 above----->  
Position Silicone from turbo inlet to correct distance from  
dipstick also Install filter enclosure lip to left side of EVAP line.



Congratulations Your All Finished! Thank you for your purchase.  
If you have any comments or concerns please do not hesitate to contact us.

### \*\*\*Special Install Notes\*\*\*

-Alignment with this intake is critically important, as we are using every possible amount of space to install this system to bring the smoothest bends and the widest diameter filter and Silicone tubing.

-If you have a forge BOP you will need to lube the silicone on the outside to slid it past the Forge BOP, and you will have a 1/16th gap between the silicone and turbo inlet which is OK and normal.

(Thanks Gigante)

-You can also utilize the RRM upper chassis brace with this intake, what you need to do is some add some washers under the bar to simply prop it up a few MM and this will allow enough clearance. (See image #7)

(Thanks Again Gigante!!)