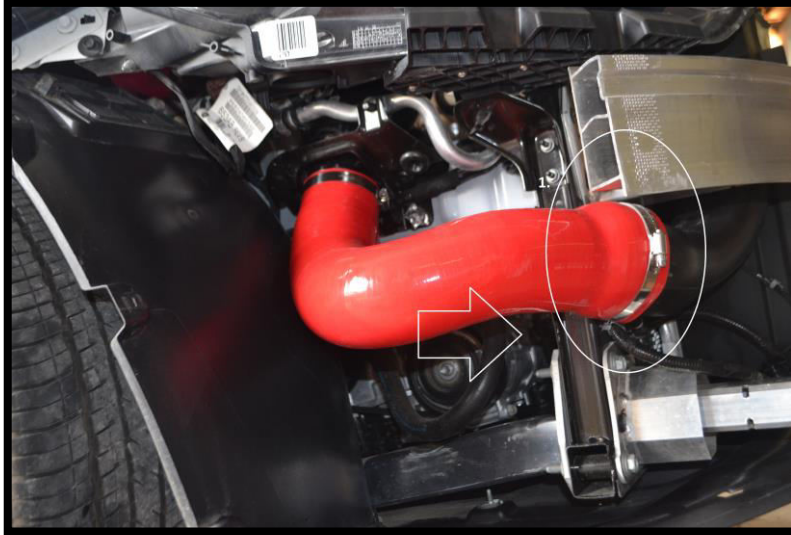
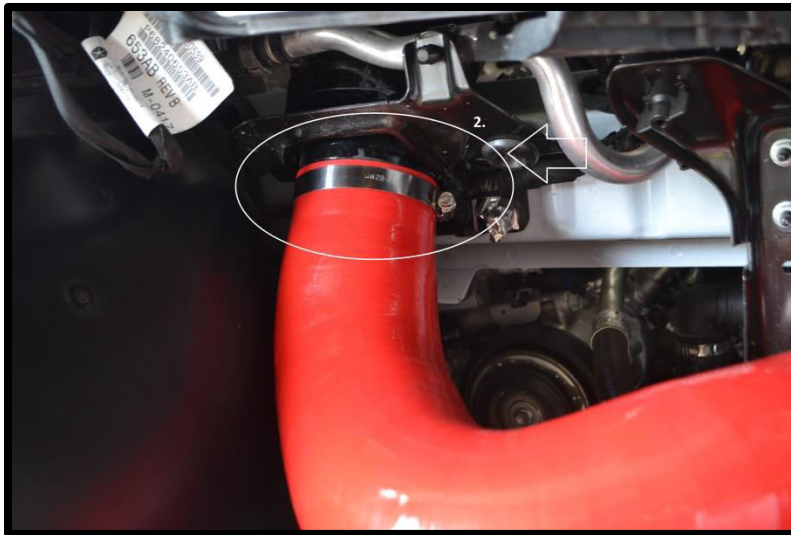


Dodge Dart Ram Air Instructions

1. Use the existing factory plastic piece to connect to the larger side of the Ram Air Tube. Do not tighten clamps yet.



2. Connect 2.75 side of Ram Air Tube to opening of Apollo filter.



3. Secure clamps (be careful tightening the clamps on the Apollo, its only plastic)